



# Committed to Excellence

Supporting Students: Effective Revision

**'Committed to Excellence'** REDHILL ACADEMY TRUST  
Exsisto Optimus





**‘Committed to Excellence’**

REDHILL ACADEMY TRUST  
Exsisto Optimus



Make a plan

Assemble your toolkit

Divide your day into chunks

Plan your day around your most productive times

Manage your distractions

Shake things up

Consider where you study

Think quality not quantity

Avoid burnout

Sleep!

**'Committed to Excellence'** REDHILL ACADEMY TRUST  
Exsisto Optimus





**MIND THE GAP**

**‘Committed to Excellence’** REDHILL ACADEMY TRUST  
Exsisto Optimus



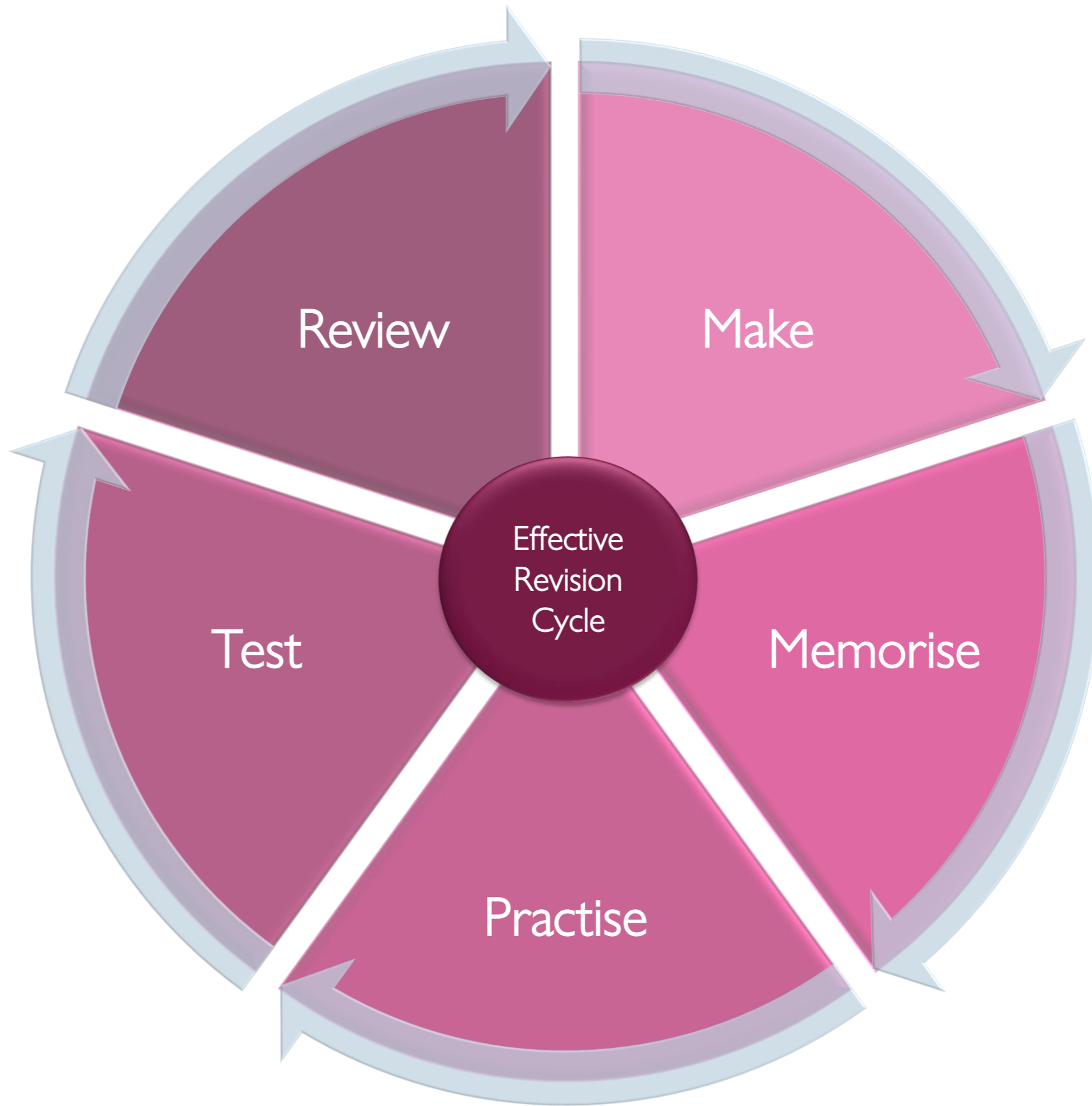
	A	B	C	D	E	F	G	H	I	J	K
				Jan-22	Feb-22	Mar-22	Apr-22	May-22	Jun-22	Jul-22	Movem ent over the next month
3											
4	Project Number	Project Name									
5											
6											
7											
8	Project Number	Project Name									
9											
10											
11											
12	Project Number	Project Name									
13											
14											
15											
16	Project Number	Project Name									
17											
18											
19											
20											
21	Project Number	Project Name									
22											
23											
24											
25											
26	Project Number	Project Name									
27											
28											
29											
30											
31											
32	Project Number	Project Name									
33											
34											
35											
36											
37											
38											
39											
40	Project Number	Project Name									
41											
42											
43											
44											

**‘Committed to Excellence’**

REDHILL ACADEMY TRUST

Exsisto Optimus





# History revision strategy from Mr Ireland Head of History Brookfield School

## Homework

**Explain what was important about the Court for Elizabeth I (8 marks)**

### Advice:

- *Explain = more than one reason*
- *Don't just describe what her Court and was, explain why it was important for Elizabeth— e.g. what did it do, who was in it, how it influenced Elizabeth and wider society*
- *8 marks = 12 minutes in the exam*

Level	Features	Mark range
1	<i>Basic explanation using basic knowledge</i>	1-2
2	<i>Simple explanation of one consequence for Elizabeth I using specific knowledge</i>	3-4
3	<i>Developed explanation of more than one consequence for Elizabeth I using a range of accurate and detailed evidence</i>	5-6
4	<i>Complex explanation of more than one consequence for Elizabeth I using a range of accurate and detailed evidence</i>	7-8

# History revision strategy from Mr Ireland

## Head of History Brookfield School

### GCSE History Knowledge Revision Card

Britain: Health and the people, c1000 to the present day

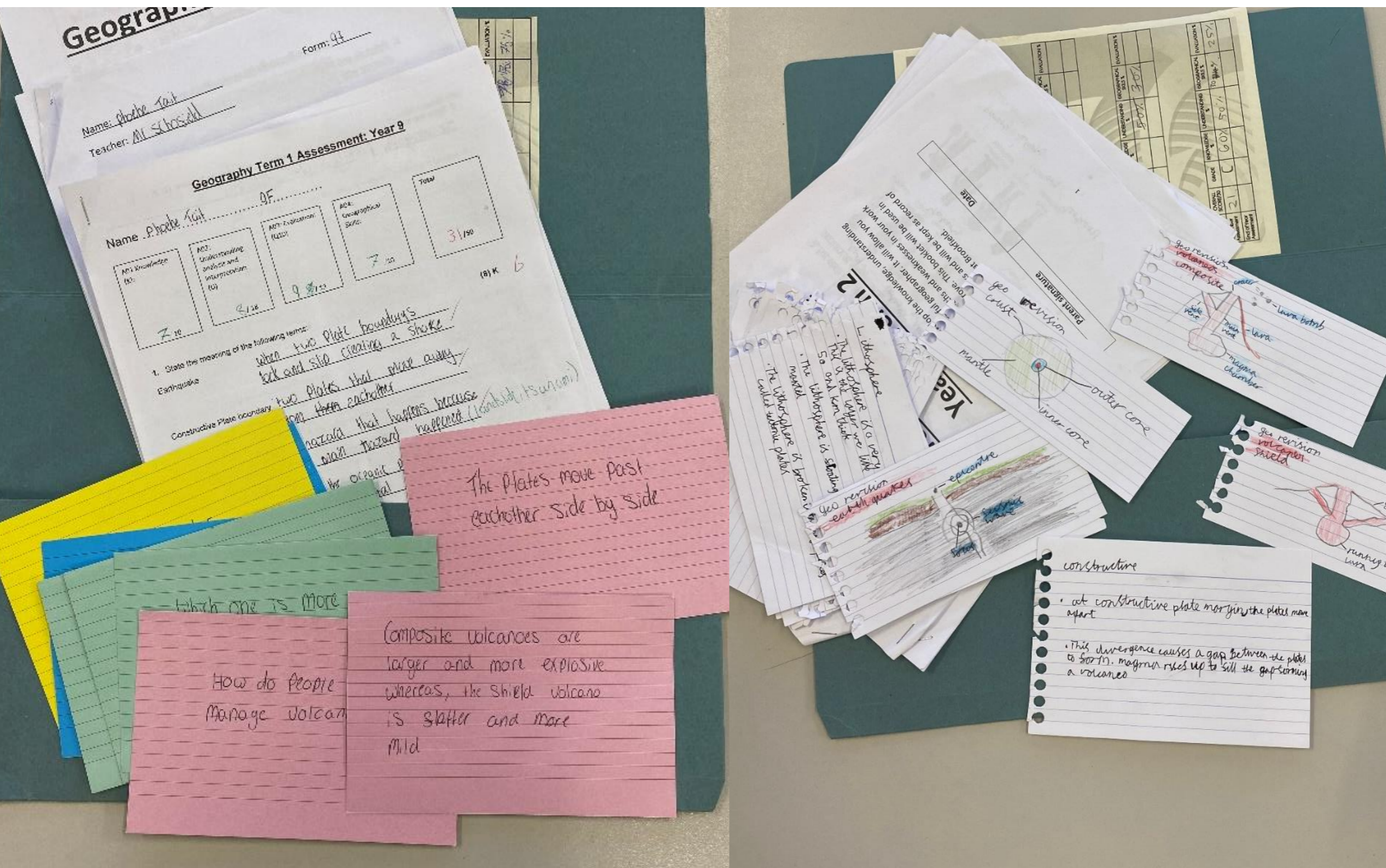
Medieval medicine: the influence of Hippocrates and Galen

Name the four humours.	
According to the theory of the four humours, how did people become ill?	
Hippocrates believed in clinical observation. What is it?	
What is the Hippocratic oath?	
Rather than using supernatural methods, which type of treatment did Hippocrates encourage?	
Which idea did Galen add to the theory of the four humours?	
Why did Galen make mistakes about the anatomy of the human body?	
Name a mistake Galen made about the human body.	
Galen discovered that which organ is the most important in the body?	
Why did the Catholic Church love the work of Claudius Galen?	





# History revision strategy from Mr Schofield Head of Geography Brookfield School



# Geography revision strategy from Mr Scofield Head of Geography Brookfield School

Composite volcanoes are  
larger and more explosive  
whereas, the shield volcano  
is flatter and more  
mild

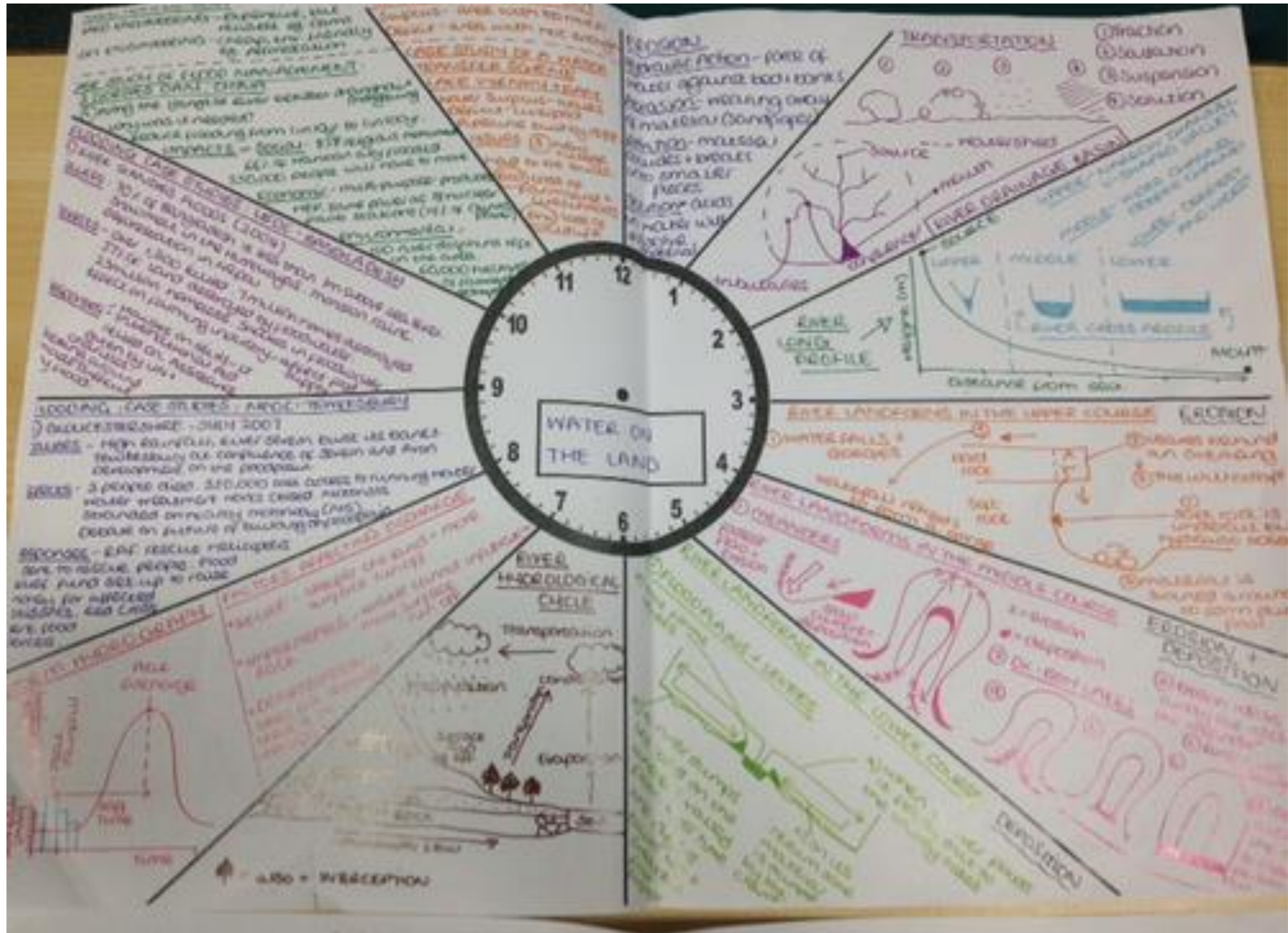
**'Committed to Excellence'**

REDHILL ACADEMY TRUST

Exsisto Optimus



# Revision Clocks



**'Committed to Excellence'**

REDHILL ACADEMY TRUST

Exsisto Optimus





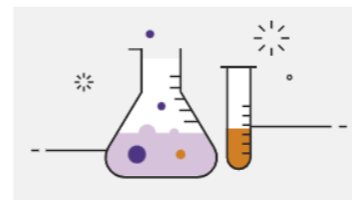
**Art and Design**



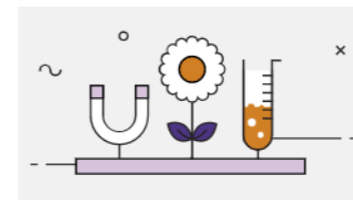
**Biology (Single Science)**



**Business**



**Chemistry (Single Science)**



**Combined Science**



**Computer Science**



**Design and Technology**



**Digital Technology (CCEA)**



**Drama**



**English Language**



**English Literature**



**French**



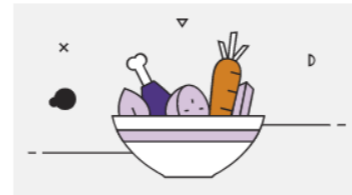
**Geography**



**German**



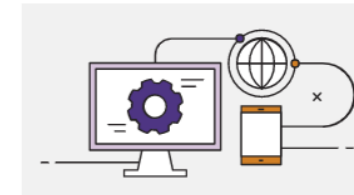
**History**



**Home Economics: Food and Nutrition (CCEA)**



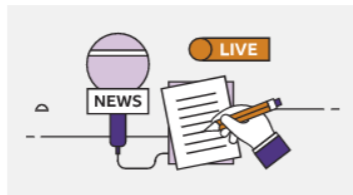
**Hospitality (CCEA)**



**ICT**



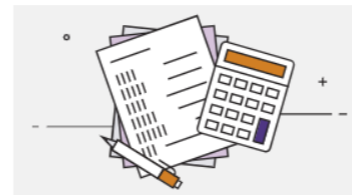
**Irish - Learners (CCEA)**



**Journalism (CCEA)**



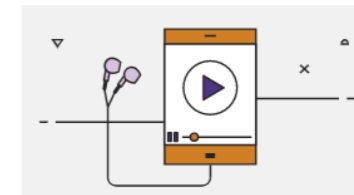
**Learning for Life and Work (CCEA)**



**Maths**



**Maths Numeracy (WJEC)**



**Media Studies**

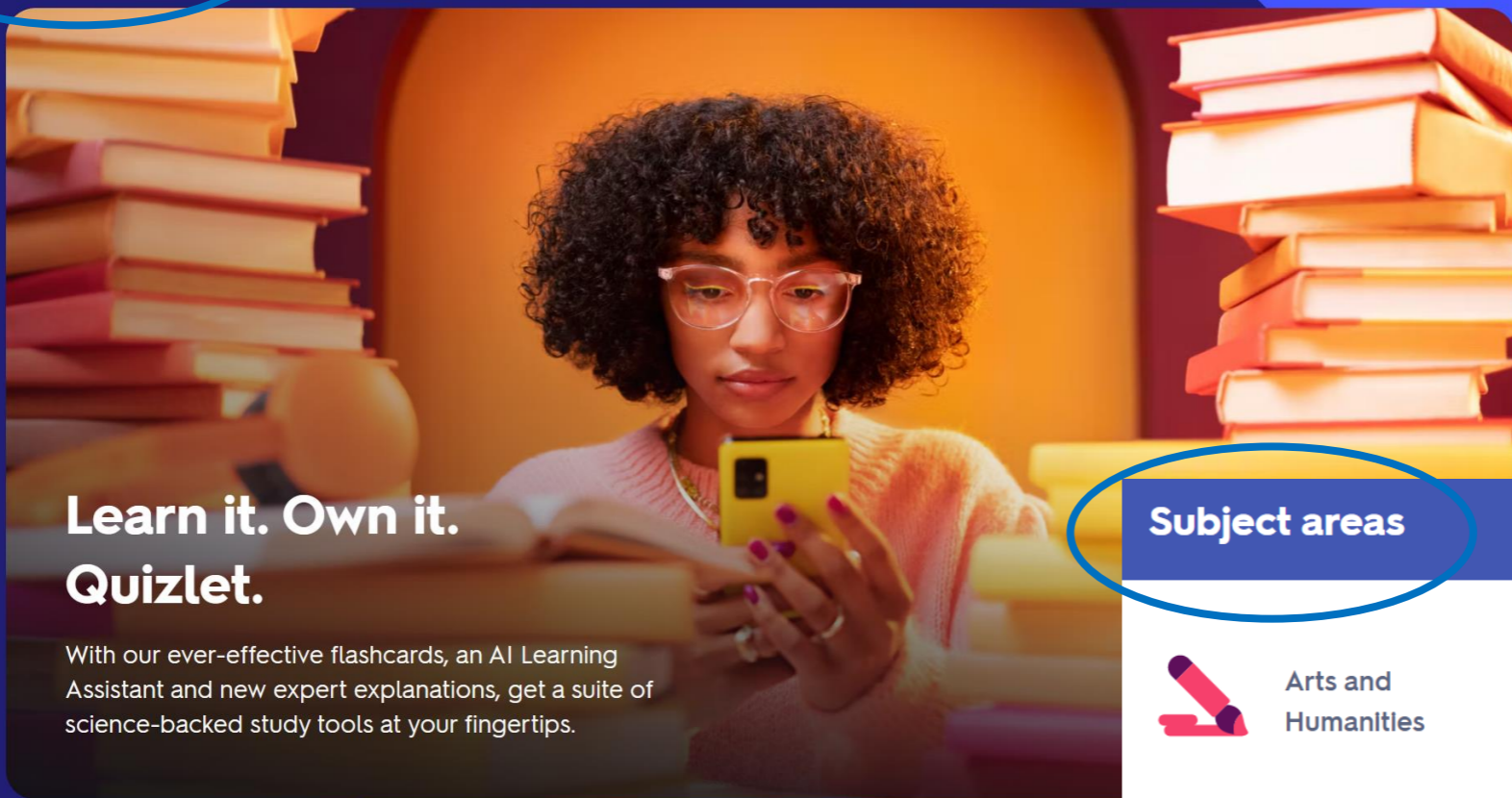
<https://www.bbc.co.uk/bitesize/levels/z98jmp3>

**'Committed to Excellence'**

REDHILL ACADEMY TRUST

Exsisto Optimus





Learn it. Own it. Quizlet.

With our ever-effective flashcards, an AI Learning Assistant and new expert explanations, get a suite of science-backed study tools at your fingertips.

Subject areas



Arts and Humanities

Philosophy  
History  
English

Film and TV  
Visual Arts  
View all



Languages

French  
Spanish  
German

Latin  
English  
View all



Maths

Arithmetic  
Geometry  
Algebra

Applied Maths  
Statistics  
View all



Science

Biology  
Chemistry  
Physics

Computer Science  
Medicine  
View all



<https://quizlet.com/en-gb>

<https://school.all-in.org.uk/>



ALL-IN

Professional MFL & EAL resources

'Committed to Excellence'

REDHILL ACADEMY TRUST  
Exsisto Optimus





## Assessment resources

Search resources   Newest first

Clear all filters

Resource type (1)

- Candidate record forms (2)
- Centre declaration sheets (4)
- Examiner reports (6)
- Grade descriptors (1)
- Mark schemes (6)
- Notes and guidance (1)
- Practice questions (1)
- Question papers

Component

Exam series

Question papers

Showing 18 results



Question paper: Paper 2 Socio-cultural influences and well-being - Nov

Published 18 Jan 2022 | PDF | 461 KB



Question paper (Modified A4 18pt): Paper 2 Socio-cultural influences and well-being - November 2020

Published 18 Jan 2022 | PDF | 475 KB



Question paper (Modified A3 36pt): Paper 2 Socio-cultural influences and well-being - November 2020

Published 18 Jan 2022 | PDF | 491 KB



Question paper: Paper 1 The human body and movement - November 2020

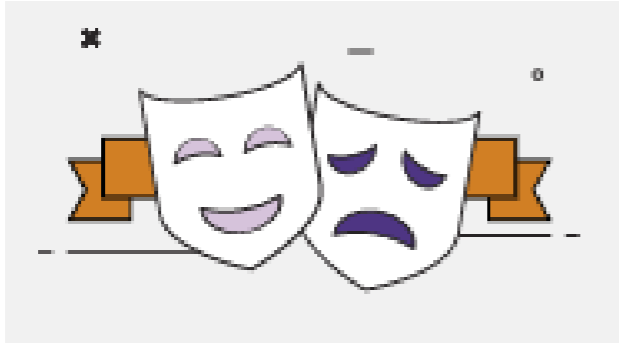
Published 18 Jan 2022 | PDF | 687 KB



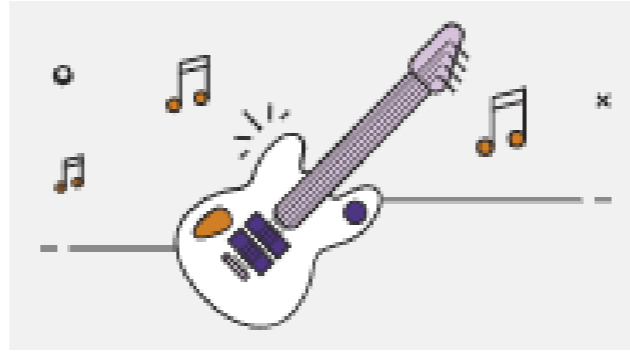
Question paper (Modified A4 18pt): Paper 1 The human body and movement - November 2020

<https://www.aqa.org.uk/subjects/physical-education/gcse/physical-education-8582>





**Drama**



**Music**



Drama (AQA)

<https://www.bbc.co.uk/bitesize/examspecs/zrnjwty>

Music (Eduquas)

<https://www.bbc.co.uk/bitesize/examspecs/zbmct39>

It is important to point out that this is just for the music **theory** section of the bitesize page.



## All Resources By Subject

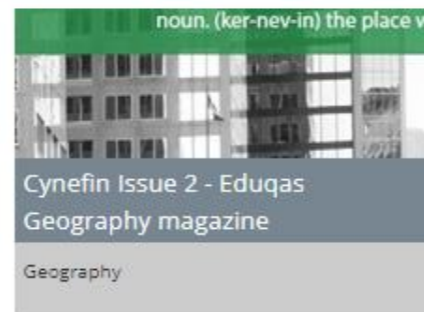
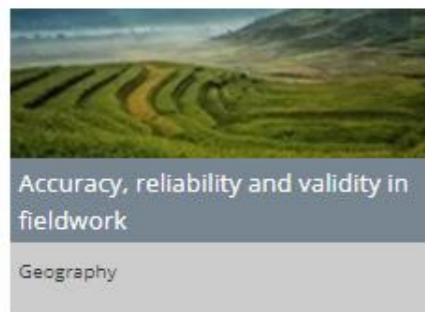
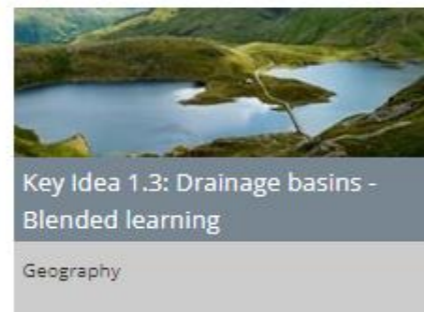
Search Options

Subjects

Keywords

Tags

Search All > Geography > KS4



<https://resources.eduqas.co.uk/Pages/ResourceByArgs.aspx?subId=13&lvlId=2>

**‘Committed to Excellence’**

REDHILL ACADEMY TRUST  
Exsisto Optimus





A-level Design and Technology: Product Design  
7552

Specification | Planning resources | Teaching resources | **Assessment resources** | Key dates

### Assessment resources




Search resources   Newest first

Clear all filters

Resource type (1)

- Candidate record forms (2)
- Centre declaration sheets (3)
- Examiner reports (3)
- Mark schemes (6)
- Notes and guidance (1)
- Question papers

Showing 12 results

-  Question paper: Paper 2 Designing and making princip  
Published 18 Jan 2022 | PDF | 1.7 MB
-  Question paper (Modified A4 18pt): Paper 2 Designing  
Published 18 Jan 2022 | PDF | 1.5 MB
-  Question paper: Paper 1 Technical principles - Novem  
Published 18 Jan 2022 | PDF | 1.3 MB



<https://www.aqa.org.uk/subjects/design-and-technology/a-level/design-and-technology-product-design-7552>

<https://designmuseum.org/design>

the DESIGN MUSEUM

### Design

For the Design Museum, design is a continually evolving subject which it explores through its exhibitions programme, publishing, permanent collection, learning and research activities.

Design is a way to understand the world and how you can change it.



**‘Committed to Excellence’**

REDHILL ACADEMY TRUST  
Exsisto Optimus



# Subject Exam Boards

## WJEC

Geography  
Engineering  
(Level 1/Level 2)  
Hospitality & Catering  
(Level 1/Level 2)  
Sport & Coaching Principles  
(Level 1/Level 2)  
Music - **EDUQAS**

## OCR

Computer Science  
ICT (Cambridge National)

## Edexcel

Business Studies  
Religious Studies

## AQA

Art & Design (Textiles)  
Art & Design (Fine Art)  
Biology  
Chemistry  
Combined Science  
Drama  
English Language  
English Literature  
French  
Further Maths  
German  
History  
Maths  
PE (GCSE)  
Physics  
Spanish

**‘Committed to Excellence’**

REDHILL ACADEMY TRUST  
Exsisto Optimus



On the day...

- Get a good night's sleep
- Drink water and have breakfast
- Arrive to school in good time.
- Attend the pre exam session.
- Bring the correct equipment.
- Read questions carefully.
- Look at the mark value of each question.
- Take care with handwriting.
- If you are not sure... have a go!
- If you finish early read through your answers.

# Good Luck!

